

Standing Proud

Composed by The Southampton Community Arr. Samantha Mason

♩ = 110

9

16

[illegible]

22

The bass line of 'The Rose Tree' is written on a single staff in bass clef. The key signature has one flat (B-flat). The melody consists of eighth and quarter notes, with a repeat sign at the end. The notes are: G2, A2, Bb2, A2, G2, F2, E2, D2, C2, Bb1, A1, G1, F1, E1, D1, C1, Bb0, A0, G0, F0, E0, D0, C0, Bb-1, A-1, G-1, F-1, E-1, D-1, C-1, Bb-2, A-2, G-2, F-2, E-2, D-2, C-2, Bb-3, A-3, G-3, F-3, E-3, D-3, C-3, Bb-4, A-4, G-4, F-4, E-4, D-4, C-4, Bb-5, A-5, G-5, F-5, E-5, D-5, C-5, Bb-6, A-6, G-6, F-6, E-6, D-6, C-6, Bb-7, A-7, G-7, F-7, E-7, D-7, C-7, Bb-8, A-8, G-8, F-8, E-8, D-8, C-8, Bb-9, A-9, G-9, F-9, E-9, D-9, C-9, Bb-10, A-10, G-10, F-10, E-10, D-10, C-10, Bb-11, A-11, G-11, F-11, E-11, D-11, C-11, Bb-12, A-12, G-12, F-12, E-12, D-12, C-12, Bb-13, A-13, G-13, F-13, E-13, D-13, C-13, Bb-14, A-14, G-14, F-14, E-14, D-14, C-14, Bb-15, A-15, G-15, F-15, E-15, D-15, C-15, Bb-16, A-16, G-16, F-16, E-16, D-16, C-16, Bb-17, A-17, G-17, F-17, E-17, D-17, C-17, Bb-18, A-18, G-18, F-18, E-18, D-18, C-18, Bb-19, A-19, G-19, F-19, E-19, D-19, C-19, Bb-20, A-20, G-20, F-20, E-20, D-20, C-20, Bb-21, A-21, G-21, F-21, E-21, D-21, C-21, Bb-22, A-22, G-22, F-22, E-22, D-22, C-22, Bb-23, A-23, G-23, F-23, E-23, D-23, C-23, Bb-24, A-24, G-24, F-24, E-24, D-24, C-24, Bb-25, A-25, G-25, F-25, E-25, D-25, C-25, Bb-26, A-26, G-26, F-26, E-26, D-26, C-26, Bb-27, A-27, G-27, F-27, E-27, D-27, C-27, Bb-28, A-28, G-28, F-28, E-28, D-28, C-28, Bb-29, A-29, G-29, F-29, E-29, D-29, C-29, Bb-30, A-30, G-30, F-30, E-30, D-30, C-30, Bb-31, A-31, G-31, F-31, E-31, D-31, C-31, Bb-32, A-32, G-32, F-32, E-32, D-32, C-32, Bb-33, A-33, G-33, F-33, E-33, D-33, C-33, Bb-34, A-34, G-34, F-34, E-34, D-34, C-34, Bb-35, A-35, G-35, F-35, E-35, D-35, C-35, Bb-36, A-36, G-36, F-36, E-36, D-36, C-36, Bb-37, A-37, G-37, F-37, E-37, D-37, C-37, Bb-38, A-38, G-38, F-38, E-38, D-38, C-38, Bb-39, A-39, G-39, F-39, E-39, D-39, C-39, Bb-40, A-40, G-40, F-40, E-40, D-40, C-40, Bb-41, A-41, G-41, F-41, E-41, D-41, C-41, Bb-42, A-42, G-42, F-42, E-42, D-42, C-42, Bb-43, A-43, G-43, F-43, E-43, D-43, C-43, Bb-44, A-44, G-44, F-44, E-44, D-44, C-44, Bb-45, A-45, G-45, F-45, E-45, D-45, C-45, Bb-46, A-46, G-46, F-46, E-46, D-46, C-46, Bb-47, A-47, G-47, F-47, E-47, D-47, C-47, Bb-48, A-48, G-48, F-48, E-48, D-48, C-48, Bb-49, A-49, G-49, F-49, E-49, D-49, C-49, Bb-50, A-50, G-50, F-50, E-50, D-50, C-50, Bb-51, A-51, G-51, F-51, E-51, D-51, C-51, Bb-52, A-52, G-52, F-52, E-52, D-52, C-52, Bb-53, A-53, G-53, F-53, E-53, D-53, C-53, Bb-54, A-54, G-54, F-54, E-54, D-54, C-54, Bb-55, A-55, G-55, F-55, E-55, D-55, C-55, Bb-56, A-56, G-56, F-56, E-56, D-56, C-56, Bb-57, A-57, G-57, F-57, E-57, D-57, C-57, Bb-58, A-58, G-58, F-58, E-58, D-58, C-58, Bb-59, A-59, G-59, F-59, E-59, D-59, C-59, Bb-60, A-60, G-60, F-60, E-60, D-60, C-60, Bb-61, A-61, G-61, F-61, E-61, D-61, C-61, Bb-62, A-62, G-62, F-62, E-62, D-62, C-62, Bb-63, A-63, G-63, F-63, E-63, D-63, C-63, Bb-64, A-64, G-64, F-64, E-64, D-64, C-64, Bb-65, A-65, G-65, F-65, E-65, D-65, C-65, Bb-66, A-66, G-66, F-66, E-66, D-66, C-66, Bb-67, A-67, G-67, F-67, E-67, D-67, C-67, Bb-68, A-68, G-68, F-68, E-68, D-68, C-68, Bb-69, A-69, G-69, F-69, E-69, D-69, C-69, Bb-70, A-70, G-70, F-70, E-70, D-70, C-70, Bb-71, A-71, G-71, F-71, E-71, D-71, C-71, Bb-72, A-72, G-72, F-72, E-72, D-72, C-72, Bb-73, A-73, G-73, F-73, E-73, D-73, C-73, Bb-74, A-74, G-74, F-74, E-74, D-74, C-74, Bb-75, A-75, G-75, F-75, E-75, D-75, C-75, Bb-76, A-76, G-76, F-76, E-76, D-76, C-76, Bb-77, A-77, G-77, F-77, E-77, D-77, C-77, Bb-78, A-78, G-78, F-78, E-78, D-78, C-78, Bb-79, A-79, G-79, F-79, E-79, D-79, C-79, Bb-80, A-80, G-80, F-80, E-80, D-80, C-80, Bb-81, A-81, G-81, F-81, E-81, D-81, C-81, Bb-82, A-82, G-82, F-82, E-82, D-82, C-82, Bb-83, A-83, G-83, F-83, E-83, D-83, C-83, Bb-84, A-84, G-84, F-84, E-84, D-84, C-84, Bb-85, A-85, G-85, F-85, E-85, D-85, C-85, Bb-86, A-86, G-86, F-86, E-86, D-86, C-86, Bb-87, A-87, G-87, F-87, E-87, D-87, C-87, Bb-88, A-88, G-88, F-88, E-88, D-88, C-88, Bb-89, A-89, G-89, F-89, E-89, D-89, C-89, Bb-90, A-90, G-90, F-90, E-90, D-90, C-90, Bb-91, A-91, G-91, F-91, E-91, D-91, C-91, Bb-92, A-92, G-92, F-92, E-92, D-92, C-92, Bb-93, A-93, G-93, F-93, E-93, D-93, C-93, Bb-94, A-94, G-94, F-94, E-94, D-94, C-94, Bb-95, A-95, G-95, F-95, E-95, D-95, C-95, Bb-96, A-96, G-96, F-96, E-96, D-96, C-96, Bb-97, A-97, G-97, F-97, E-97, D-97, C-97, Bb-98, A-98, G-98, F-98, E-98, D-98, C-98, Bb-99, A-99, G-99, F-99, E-99, D-99, C-99, Bb-100, A-100, G-100, F-100, E-100, D-100, C-100, Bb-101, A-101, G-101, F-101, E-101, D-101, C-101, Bb-102, A-102, G-102, F-102, E-102, D-102, C-102, Bb-103, A-103, G-103, F-103, E-103, D-103, C-103, Bb-104, A-104, G-104, F-104, E-104, D-104, C-104, Bb-105, A-105, G-105, F-105, E-105, D-105, C-105, Bb-106, A-106, G-106, F-106, E-106, D-106, C-106, Bb-107, A-107, G-107, F-107, E-107, D-107, C-107, Bb-108, A-108, G-108, F-108, E-108, D-108, C-108, Bb-109, A-109, G-109, F-109, E-109, D-109, C-109, Bb-110, A-110, G-110, F-1

28

[illegible]

34

[illegible]

40

[illegible]

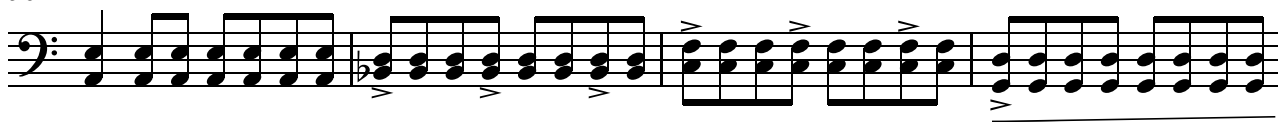
44

The bass line of 'The Rose Tree' is written on a single staff in bass clef. It begins with a series of eighth notes: G2, A2, B2, C3, D3, E3, F3, G3, A3, B3, C4, D4, E4, F4, G4, A4, B4, C5, D5, E5, F5, G5, A5, B5, C6, D6, E6, F6, G6, A6, B6, C7, D7, E7, F7, G7, A7, B7, C8, D8, E8, F8, G8, A8, B8, C9, D9, E9, F9, G9, A9, B9, C10, D10, E10, F10, G10, A10, B10, C11, D11, E11, F11, G11, A11, B11, C12, D12, E12, F12, G12, A12, B12, C13, D13, E13, F13, G13, A13, B13, C14, D14, E14, F14, G14, A14, B14, C15, D15, E15, F15, G15, A15, B15, C16, D16, E16, F16, G16, A16, B16, C17, D17, E17, F17, G17, A17, B17, C18, D18, E18, F18, G18, A18, B18, C19, D19, E19, F19, G19, A19, B19, C20, D20, E20, F20, G20, A20, B20, C21, D21, E21, F21, G21, A21, B21, C22, D22, E22, F22, G22, A22, B22, C23, D23, E23, F23, G23, A23, B23, C24, D24, E24, F24, G24, A24, B24, C25, D25, E25, F25, G25, A25, B25, C26, D26, E26, F26, G26, A26, B26, C27, D27, E27, F27, G27, A27, B27, C28, D28, E28, F28, G28, A28, B28, C29, D29, E29, F29, G29, A29, B29, C30, D30, E30, F30, G30, A30, B30, C31, D31, E31, F31, G31, A31, B31, C32, D32, E32, F32, G32, A32, B32, C33, D33, E33, F33, G33, A33, B33, C34, D34, E34, F34, G34, A34, B34, C35, D35, E35, F35, G35, A35, B35, C36, D36, E36, F36, G36, A36, B36, C37, D37, E37, F37, G37, A37, B37, C38, D38, E38, F38, G38, A38, B38, C39, D39, E39, F39, G39, A39, B39, C40, D40, E40, F40, G40, A40, B40, C41, D41, E41, F41, G41, A41, B41, C42, D42, E42, F42, G42, A42, B42, C43, D43, E43, F43, G43, A43, B43, C44, D44, E44, F44, G44, A44, B44, C45, D45, E45, F45, G45, A45, B45, C46, D46, E46, F46, G46, A46, B46, C47, D47, E47, F47, G47, A47, B47, C48, D48, E48, F48, G48, A48, B48, C49, D49, E49, F49, G49, A49, B49, C50, D50, E50, F50, G50, A50, B50, C51, D51, E51, F51, G51, A51, B51, C52, D52, E52, F52, G52, A52, B52, C53, D53, E53, F53, G53, A53, B53, C54, D54, E54, F54, G54, A54, B54, C55, D55, E55, F55, G55, A55, B55, C56, D56, E56, F56, G56, A56, B56, C57, D57, E57, F57, G57, A57, B57, C58, D58, E58, F58, G58, A58, B58, C59, D59, E59, F59, G59, A59, B59, C60, D60, E60, F60, G60, A60, B60, C61, D61, E61, F61, G61, A61, B61, C62, D62, E62, F62, G62, A62, B62, C63, D63, E63, F63, G63, A63, B63, C64, D64, E64, F64, G64, A64, B64, C65, D65, E65, F65, G65, A65, B65, C66, D66, E66, F66, G66, A66, B66, C67, D67, E67, F67, G67, A67, B67, C68, D68, E68, F68, G68, A68, B68, C69, D69, E69, F69, G69, A69, B69, C70, D70, E70, F70, G70, A70, B70, C71, D71, E71, F71, G71, A71, B71, C72, D72, E72, F72, G72, A72, B72, C73, D73, E73, F73, G73, A73, B73, C74, D74, E74, F74, G74, A74, B74, C75, D75, E75, F75, G75, A75, B75, C76, D76, E76, F76, G76, A76, B76, C77, D77, E77, F77, G77, A77, B77, C78, D78, E78, F78, G78, A78, B78, C79, D79, E79, F79, G79, A79, B79, C80, D80, E80, F80, G80, A80, B80, C81, D81, E81, F81, G81, A81, B81, C82, D82, E82, F82, G82, A82, B82, C83, D83, E83, F83, G83, A83, B83, C84, D84, E84, F84, G84, A84, B84, C85, D85, E85, F85, G85, A85, B85, C86, D86, E86, F86, G86, A86, B86, C87, D87, E87, F87, G87, A87, B87, C88, D88, E88, F88, G88, A88, B88, C89, D89, E89, F89, G89, A89, B89, C90, D90, E90, F90, G90, A90, B90, C91, D91, E91, F91, G91, A91, B91, C92, D92, E92, F92, G92, A92, B92, C93, D93, E93, F93, G93, A93, B93, C94, D94, E94, F94, G94, A94, B94, C95, D95, E95, F95, G95, A95, B95, C96, D96, E96, F96, G96, A96, B96, C97, D97, E97, F97, G97, A97, B97, C98, D98, E98, F98, G98, A98, B98, C99, D99, E99, F99, G99, A99, B99, C100, D100, E100, F100, G100, A100, B100, C101, D101, E101, F101, G101, A101, B101, C102, D102, E102, F102, G102, A102, B102, C103, D103, E103, F103, G103, A103, B103, C104, D104, E104, F104, G104, A104, B104, C105, D105, E105, F105, G105, A105, B105, C106, D106, E106, F106, G106, A106, B106, C107, D107, E107, F107, G107, A107, B107, C108, D108, E108, F108, G108, A108, B108, C109, D109, E109, F109, G109, A109, B109, C110, D110, E110, F110, G110, A110, B110, C111, D111, E111, F111, G111, A111, B111, C112, D112, E112, F112, G112, A112, B112, C113, D113, E113, F113, G113, A113, B113, C114, D114, E114, F114, G114, A114, B114, C115, D115, E115, F115, G115, A115, B115, C116, D116, E116, F116, G116, A116, B116, C117, D117, E117, F117, G117, A117, B117, C118, D118, E118, F118, G118, A118, B118, C119, D119, E119, F119, G119, A119, B119, C120, D120, E120, F120, G120, A120, B120, C121, D121, E121, F121, G121, A121, B121, C122, D122, E122, F122, G122, A122, B122, C123, D123, E123, F123, G123, A123, B123, C124, D124, E124, F124, G124, A124, B124, C125, D125, E125, F125, G125, A125, B125, C126, D126, E126, F126, G126, A126, B126, C127, D127, E127, F127, G127, A127, B127, C128, D128, E128, F128, G128, A128, B128, C129, D129, E129, F129, G129, A129, B129, C130, D130, E130, F130, G130, A130, B130, C131, D131, E131, F131, G131, A131, B131, C132, D132, E132, F132, G132, A132, B132, C133, D133, E133, F133, G133, A133, B133, C134, D134, E134, F134, G134, A134, B134, C135, D135, E135, F135, G135, A135, B135, C136, D136, E136, F136, G136, A136, B136, C137, D137, E137, F137, G137, A137, B137, C138, D138, E138, F138, G138, A138, B138, C139, D

50

[illegible]

56



60



65



68



71



74



77



80



85



90

